



2011-12 WOMEN'S GOLF UNIVERSITY OF WASHINGTON

Athletic Communications • Box 354070 • Graves Hall • Seattle, WA 98195 • (206) 543-2230 • (206) 543-5000 fax

SID Contact: Brian Tom (briantom@uw.edu)

www.GoHuskies.com

NCAA East Regional Release

May 7, 2012

UW Schedule of Events

Wednesday, May 9 (all times are PST)

7:04 a.m. Washington Practice Round (tee No. 1)

Thursday, May 10

4:30 a.m. 1st Round off No. 10 (UW, Texas, Tulane)

Friday, May 11

8:50 a.m. 2nd Round off No. 1 (UW, Texas, Tulane)

Saturday, May 12

TBA Determined by standings

WASHINGTON EARNS NO. 10 SEED IN THE EAST REGION OF NCAA TOURNAMENT

Penn State University will 24 teams and 6 individuals at the Penn State Blue Course

UW HEADING EAST FOR NCAA REGIONAL

The Huskies will be a No. 10 seed and compete at the East Region hosted by Penn State University at Penn State Golf Course. The Huskies will be making their 19th NCAA regional appearance and will be trying to advance to their 11th championship. Washington was seventh at last year's West Region hosted at Washington National in Auburn, Wash. and then 16th at the Championship held in College Station, Texas. All three regional tournaments will be held May 10-12. The top eight teams from each region will advance to the NCAA Championship to be held May 22-25 at Vanderbilt Legends Club in Franklin, Tenn. The Huskies are one of three Pac-12 teams assigned to play in State College, Pa. Joining them are Arizona State and Arizona. Alabama, from the SEC, is the overall No. 1 seed in the region.

Following The Huskies

There are numerous ways fans can follow Washington Husky women's golf, including on GoHuskies.com, Twitter and Facebook.

GoHuskies.com: <http://www.gohuskies.com>

Facebook: <http://www.facebook.com/UWWomenGolf>

Twitter: <http://twitter.com/UWSportsNews>
http://twitter.com/UW_WGolf

Washington Quick Facts

SCHOOL INFORMATION

Institution:University of Washington
Location:Seattle, Wash.
Enrollment:42,000 (31,474 undergraduates)
Founded:Nov. 4, 1861
Nickname:Huskies
Affiliation:NCAA Division I
Colors:Purple (PMS 5265) and Gold (PMS 7502)
Mascot:Dubs (live) & Harry the Husky (costumed)
Conference:Pacific-12
President:Michael Young
Athletic Director:Scott Woodward
Website:www.gohuskies.com

WOMEN'S GOLF INFORMATION

Coach:Mary Lou Mulflur, 29th year (Washington, '80)
Asst. Coach:Andrea VanderLende, 3rd year (Florida, '05)
NCAA Regional Appearances:19
Best Finish:3rd, 2006
Best Individual Finish:1st, Paige Mackenzie, 2006 & Dodie Mazzuca, 1997
NCAA Championship Appearances:10 (last in 2011)
Best Finish:6th, 2004 & 2006
Best Individual Finish:8th, P. Mackenzie, 2006

THE COURSE

Penn State Golf Courses are public courses located in State College, Pennsylvania. Surrounded by the scenic rolling mountains of central Pennsylvania, the courses are located just south of campus. The teams will be competing on the Blue Course, a 6,253-yard, par-72 track.

LIVE COVERAGE

Live scoring will be available daily on Golfstat.com. In addition, GoHuskies.com will have daily recaps.

THE HUSKIES IN A NUTSHELL

Head Coach **Mary Lou Mulflur** is in her 29th season at Washington, the longest tenured coach in the Pac-12 Conference ... The team has won one tournament this season, the Cougar Cup, their first competition of the year coming way back in September. In all, Washington has finished third or better in five of 11 tournament this year ... Washington is attempting to make back-to-back NCAA championship appearances for the first time since 2004, 2005 & 2006 ... Currently, the Huskies are ranked **23rd in the Golfweek/Sagarin rankings and 29th by Golfstat.com** ... The Huskies are a relatively young team that features three freshmen, a sophomore and a lone senior in their lineup. Washington will have a lineup of: **SooBin Kim** (Fr.), **Sadena Parks** (Sr.), **Jennifer Yang** (Fr.), **Cyd Okino** (Fr.) and **Kelli Bowers** (So.) ... **Kim** was named to the Pac-12 All-Conference second team. She is the first Husky since current LPGA Tour pro **Paige Mackenzie** (1st Team, 2006) to earn either first or second team all-conference honors ... **Kim** and **Yang** were high school teammates at Gleneagle Secondary in British Columbia, Canada ... **Kim** is currently ranked 39th by Golfstat.com and 42nd by Golfweek.com ... Okino played in the U.S. Open as a 14-year-old phenom. She attended the same high school in Hawai'i -- Punahou -- that President Barack Obama attended.

PAC-12 POWER

Washington has mostly went under the radar this season, perhaps because of the strength of its conference. The Huskies are one of 10 teams to advance from the Pac-12 to an NCAA regional (only 11 conference schools compete in golf). Both USC and UCLA were named No. 1 seeds in the Central and West regions, respectively. The Pac-12 has captured 14 NCAA team titles in women's golf, led by Arizona State's seven wins. A total of 12 individual champions have come out of the conference.

THE FIELD

Below are a list of the 24 teams and 6 individuals that are participating in the NCAA East Region. Eight teams and 2 individuals from non-advancing teams will move on to the NCAA Championship in Nashville, Tenn.

East Region Teams:

1. Alabama
2. Arizona State
3. Duke
4. Texas A&M
5. Florida
6. Arizona
7. Oklahoma State
8. South Carolina
9. Michigan State
10. Washington
11. Texas
12. Tulane

13. UCF
14. Wake Forest
15. Northwestern
16. San Diego State
17. Kent State
18. Maryland
19. Augusta State
20. Campbell
21. Chattanooga
22. Oral Roberts
23. Jacksonville
24. LIU Brooklyn

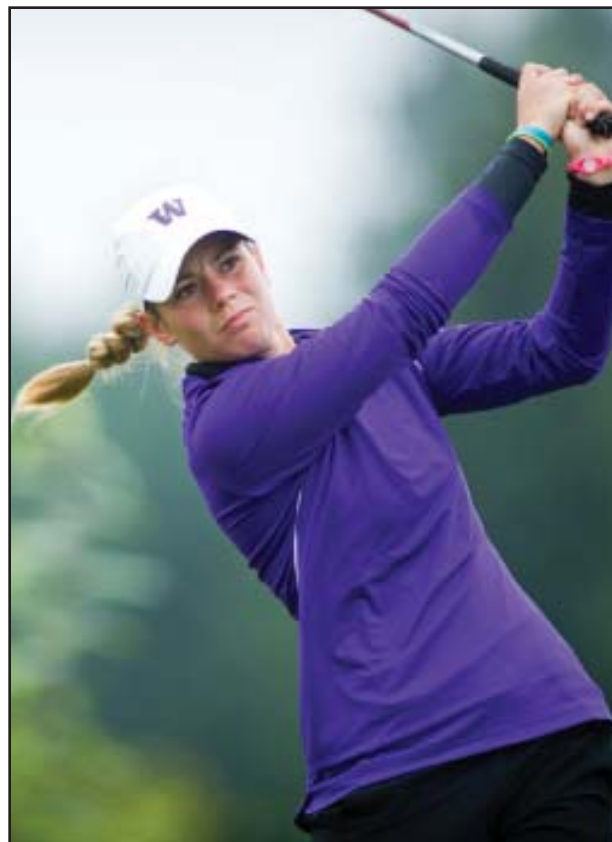
Individuals:

Fanny Cnops, UNC-Greensboro
Charlotte Lorentzen, Georgia State
Katie Mundy, FIU
Michelle Piyapattara, Columbia
Kelly Shon, Princeton
Laura Wearn, Furman



KELLI BOWERS

Sophomore
Chelan, Wash.
Chelan HS



2011-12 HIGHLIGHTS AND NOTES:

- Fourth on team with 75.97 scoring average per round.
- Competed in every event for Huskies and has four top-20 finishes.
- Was Huskies top finisher in the Battle at Rancho Bernardo and ended up tied for 19th overall.
- Led UW at 2011 NCAA Championship shooting 297 (+9) to tie for 26th, the sixth best finish by a Husky at the Championship and 2nd best ever by a freshman.
- Was Huskies top finisher in her collegiate debut at the Washington State Invitational at Palouse Ridge.
- Career-best team tournament 7th place finish came in collegiate debut at WSU Invitational.
- Took second at 36-hole Gonzaga Spring Invitational in 2011, finishing behind teammate Darcie Richmond.
- Shot a career-best 54-hole score of 218 at the Stanford Intercollegiate.
- 10 career top-25 finishes in 23 events competed.
- Great all-around athlete that was First Team All-State in the Washington Class A division in both basketball and volleyball.

BOWERS' CAREER STATISTICS

YEAR	ROUNDS	STROKES	AVERAGE	LOW
2010-11	35	2669	76.26	70
2011-12	31	2355	75.97	71
TOTALS	66	5024	76.12	70

Career Best Finish: 2nd, Gonzaga Spring Invitational, April 10, 2011

Career Top-10 Finishes: 2

Career Best 54-Hole Score: 218, Stanford Intercollegiate, Oct. 14-16, 2011

BOWERS' 2011-12 SEASON STATS

Date	Score	Tournament	Overall Place	Place on Team
9/19-20	81-74-73-228 (+12)	WSU Cougar Cup	T14th of 86	4th of 5
10/3-5	77-76-75-228 (+12)	Edean Ihlanfeldt Invitational	T12th of 63	T2nd of 5
10/14-16	74-73-71-218 (+5)	Stanford Intercollegiate	T39th of 90	3rd of 5
10/21-23	76-81-73-230 (+14)	Pac-12/SEC Challenge	T70th of 120	4th of 5
1/1-2	76-73-74-223 (+7)	Rainbow Wahine Invitational	T16th of 67	T4th of 5
2/18-19	78-76-154 (+12)	Peg Barnard Invitational	T24th of 70	3rd of 5
3/5-6	71-76-77-224 (+8)	Juli Inkster Invitational	11th of 66	2nd of 5
3/19-20	76-74-150 (+6)	Battle at Rancho Bernardo	T19th of 90	1st of 5
3/31-4/1	80-72-82-234 (+21)	Lady Sun Devil Invitational	T75th of 90	4th of 5
4/16-17	72-75-77-224 (+8)	Pacific Coast Intercollegiate	T45th of 75	5th of 5
4/27-29	84-79-79-242 (+26)	Pac-12 Championship	T53rd of 55	5th of 5



SooBIN KIM

Freshman
Coquitlam, B.C.
Gleneagle Secondary School

2011-12 HIGHLIGHTS AND NOTES:

- Named to the Pac-12 All-Conference Second Team. Is the first Husky since Paige Mackenzie (2006) to be named first or second team all-conference.
- Team-best 73.38 stroke average per round ranks as second best in UW single-season history.
- Set a UW tournament record by shooting 200 (-13) at the Stanford Intercollegiate to collect her first career win.
- Tied for second overall in her college debut at the WSU Cougar Cup.
- Five top-10 finishes equals 7th most in UW history and is tied for the most by a UW freshman.
- Competed in all 11 events and has shot in the 60's four times, including a 66 (-5) in the first round of the Stanford Intercollegiate.
- Huskies top finisher in seven events.
- Was a prep teammate fellow UW freshman Jennifer Yang at Gleneagle Secondary in Canada.



KIM'S CAREER STATISTICS

YEAR	ROUNDS	STROKES	AVERAGE	LOW
2011-12	31	2275	73.38	66
TOTALS	31	2275	73.38	66

Career Best Finish: 1st, Stanford Intercollegiate, Oct. 14-16, 2011

Career Top-10 Finishes: 5

Career Best 54-Hole Score: 200, Stanford Intercollegiate, Oct. 14-16, 2011

Career Best 18-Hole Score: 66 (-5), Stanford Intercollegiate, Oct. 14, 2011

KIM'S 2011-12 SEASON STATS

Date	Score	Tournament	Overall Place	Place on Team
9/19-20	76-70-75-221 (+5)	WSU Cougar Cup	T2nd of 86	1st of 5
10/3-5	76-76-80-232(+16)	Edean Ihlanfeldt Invitational	T27th of 63	4th of 5
10/14-16	66-68-66-200 (-13)	Stanford Intercollegiate	1st of 90	1st of 5
10/21-23	73-75-68-216 (E)	Pac-12/SEC Challenge	6th of 120	1st of 5
1/1-2	75-75-70-220 (+4)	Rainbow Wahine Invitational	12th of 67	3rd of 5
2/18-19	75-71-146 (+4)	Peg Barnard Invitational	T3rd of 70	1st of 5
3/5-6	73-72-77-222 (+6)	Juli Inkster Invitational	T6th of 66	1st of 5
3/19-20	77-76-153 (+9)	Battle at Rancho Bernardo	T30th of 90	T2nd of 5
3/31-4/1	75-78-72-225 (+12)	Lady Sun Devil Invitational	T41th of 90	2nd of 5
4/16-17	72-74-72-218 (+2)	Pacific Coast Intercollegiate	T17th of 75	T1st of 5
4/27-29	75-72-75-222 (+6)	Pac-12 Championship	T12th of 55	1st of 5



CYD OKINO

**Freshman
Honolulu, Hawai'i
Punahoa HS**

2011-12 HIGHLIGHTS AND NOTES:

- Has competed in 10 events for the Huskies.
- Tied for 5th in her collegiate debut at the WSU Cougar Cup, her only top-10 finish this season.
- Shot her low round of 4-under 68 in her second collegiate round at Palouse Ridge in Pullman, Wash.
- Notched her best tournament score of 220 at the Pacific Coast Intercollegiate.
- Played in the U.S. Open as a 14-year-old junior after winning a qualifier at Turtle Bay.
- Attended Punahou HS, the same school President Barack Obama attended.



OKINO'S CAREER STATISTICS

YEAR	ROUNDS	STROKES	AVERAGE	LOW
2011-12	28	2131	76.11	68
TOTALS	28	2131	76.11	68

Career Best Finish: T5th, WSU Cougar Cup, Sept. 19-20, 2011

Career Top-10 Finishes: 1

Career Best 54-Hole Score: 220, Pacific Coast Intercollegiate, April 16-17, 2012

Career Best 18-Hole Score: 68 (-4), WSU Cougar Cup, Sept. 19, 2011

OKINO'S 2011-12 SEASON STATS

Date	Score	Tournament	Overall Place	Place on Team
9/19-20	76-68-79-223 (+7)	WSU Cougar Cup	T5th of 86	T2nd of 5
10/3-5	79-72-77-228 (+12)	Edean Ihlanfeldt Invitational	T12th of 63	T2nd of 5
10/14-16	71-76-75-222 (+9)	Stanford Intercollegiate	T57th of 90	5th of 5
10/21-23	74-75-77-226 (+10)	Pac-12/SEC Challenge	T53rd of 120	2nd of 5
1/1-2	72-76-75-223 (+7)	Rainbow Wahine Invitational	T16th of 67	T4th of 5
2/18-19	73-78-151 (+9)	Peg Barnard Invitational	T13th of 70	2nd of 5
3/5-6	83-79-78-240 (+24)	Juli Inkster Invitational	T43rd of 66	5th of 5
3/19-20	83-83-166 (+22)	Battle at Rancho Bernardo	T82nd of 90	5th of 5
4/16-17	72-73-75-220 (+4)	Pacific Coast Intercollegiate	T28th of 75	4th of 5
4/27-29	79-76-77-232 (+16)	Pac-12 Championship	T44th of 55	4th of 5



SADENA PARKS

Senior
Bethel, Wash.
Bethel HS



2011-12 HIGHLIGHTS AND NOTES:

- One of 2 seniors on the roster. She has played 117 career rounds, the 10th most in UW history.
- Has 5 top-25 finishes and 2 top-10's in 9 events this season. UW's top finisher in three events.
- Scoring average of 74.73 ranked second on the team and 8th best in UW single-season history.
- Career best 2nd place tie at Rainbow Wahine Invitational in January.
- Season-low 5-under 66 in the first round of the Stanford Intercollegiate.
- Set women's course record at Washington National with a career-low 66 (-6) in the second round of the 2011 West Regional.
- Her 66 tied for the second lowest round ever by a Husky and was just the fourth time in UW history a golfer has shot 66 or better.
- Was UW's top finisher at the 2011 NCAA Regional placing 22nd and Pac-10 Championship, tying for 19th.
- Career-best 8th place finish at Peg Barnard Invitational.
- Best 54-hole score 219 came in the Edean Ihlanfeldt Invitational at

PARKS' CAREER STATISTICS

YEAR	ROUNDS	STROKES	AVERAGE	LOW
2008-09	24	1875	78.54	74
2009-10	31	2384	76.90	70
2010-11	36	2743	76.19	66
2011-12	26	1942	74.73	66
TOTALS	117	8944	76.44	66

Career Best Finish: T2nd, Rainbow Wahine Invitational, Jan. 1-2, 2011

Career Top-10 Finishes: 3

Career Best 54-Hole Score: 213 (-3), Rainbow Wahine Invitational, Jan. 1-2, 2011

Career Best 18-Hole Score: 66 (-6), NCAA West Regional, May. 6, 2011 & 66 (-5), Stanford Intercollegiate, Oct. 14, 2011

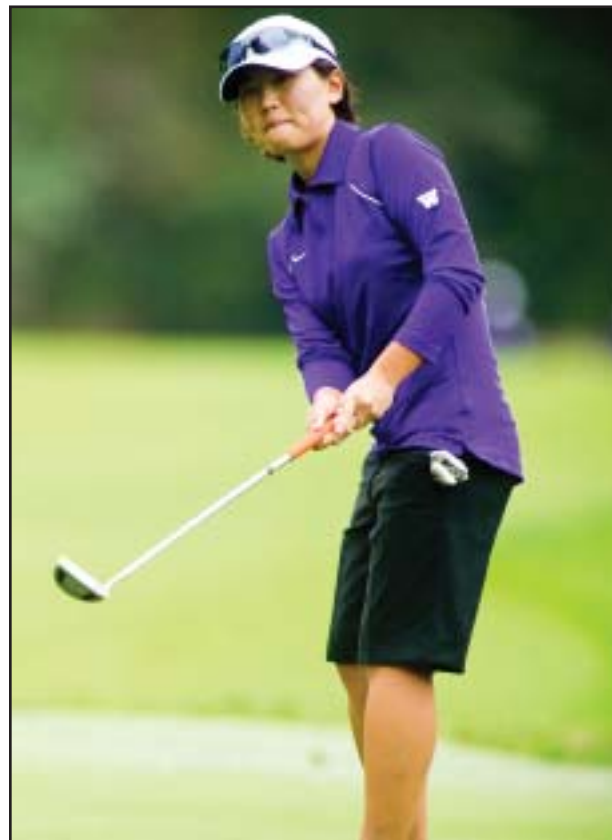
PARKS' 2011-12 SEASON STATS

Date	Score	Tournament	Overall Place	Place on Team
9/19-20	78-74-71-223 (+7)	WSU Cougar Cup	T5th of 86	T2nd of 5
10/3-5	77-78-79-234 (+18)	Edean Ihlanfeldt Invitational	T32nd of 63	5th of 5
10/14-16	66-74-74-214 (+1)	Stanford Intercollegiate	T20th of 90	2nd of 5
10/21-23	72-76-81-229 (+13)	Pac-12/SEC Challenge	T67th of 120	3rd of 5
1/1-2	76-69-68-213 (-3)	Rainbow Wahine Invitational	T2nd of 67	1st of 5
3/19-20	82-79-161 (+17)	Battle at Rancho Bernardo	T72nd of 90	4th of 5
3/31-4/1	69-75-77-221 (+8)	Lady Sun Devil Invitational	T24th of 90	1st of 5
4/16-17	72-76-70-218 (+2)	Pacific Coast Intercollegiate	T17th of 75	T1st of 5
4/27-29	81-70-79-230 (+14)	Pac-12 Championship	T39th of 55	3rd of 5



JENNIFER YANG

**Freshman
Coquitlam, B.C.
Gleneagle Secondary School**



2011-12 HIGHLIGHTS AND NOTES:

- Third on team with 74.97 scoring average per round.
- Competed in every event for Huskies and has six top-25 finishes and a pair of top-10's.
- Led UW and tied for 2nd overall at the Edean Ihlanfeldt Invitational in just her second collegiate event.
- Shot in the 60's twice, both rounds of 3-under 69.
- Won back-to-back British Columbia Junior Championships in 2010 and 2011.
- Shot 7-under par (285) to win by three strokes over UW teammate SooBin Kim in the 2011 Royale Cup Canadian Junior Girls Championship at QGolf Club in Richmond, B.C.
- Graduated from Gleneagle Secondary School in Coquitlam, B.C, the same school as teammate SooBin Kim.

YANG'S CAREER STATISTICS

YEAR	ROUNDS	STROKES	AVERAGE	LOW
2011-12	31	2324	74.97	69
TOTALS	31	2324	74.97	69

Career Best Finish: T2nd, Edean Ihlanfeldt Invitational, Oct. 3-5, 2011

Career Top-10 Finishes: 2

Career Best 54-Hole Score: 215, Edean Ihlanfeldt Invitational, Oct. 3-5, 2011

Career Best 18-Hole Score: 69 (-3), twice, Pac-12 Championship, April 29, 2012 & Pacific Coast Championship, April 17, 2012

YANG'S 2011-12 SEASON STATS

Date	Score	Tournament	Overall Place	Place on Team
9/19-20	79-73-77-229 (+13)	WSU Cougar Cup	T20th of 86	5th of 5
10/3 -5	73-70-72-215 (-1)	Edean Ihlanfeldt Invitational	T2nd of 63	1st of 5
10/14-16	75-72-72-219 (+6)	Stanford Intercollegiate	T47th of 90	4th of 5
10/21-23	76-75-81-232 (+16)	Pac-12/SEC Challenge	T85th of 120	5th of 5
1/1-2	72-72-73-217 (+1)	Rainbow Wahine Invitational	T8th of 67	2nd of 5
2/18-19	81-78-159 (+17)	Peg Barnard Invitational	T34th of 70	5th of 5
3/5-6	75-75-79-229 (+13)	Juli Inkster Invitational	T17th of 66	3rd of 5
3/19-20	78-75-153 (+9)	Battle at Rancho Bernardo	T30th of 90	T2nd of 5
3/31-4/1	74-72-81-227 (+14)	Lady Sun Devil Invitational	T51st of 90	3rd of 5
4/16-17	75-75-69-219 (+3)	Pacific Coast Intercollegiate	T22nd of 75	3rd of 5
4/27-29	80-76-69-225 (+9)	Pac-12 Championship	T25th of 55	2nd of 5

2011-12 TOURNAMENT STATS OF OTHER UW INDIVIDUALS



JENNIFER LIEDES

Freshman

Olympia, Wash. (Olympia HS)

2011-12 Tournament Results

Date	Score	Tournament
9/19-20	78-80-79-237 (+21)	WSU Cougar Cup
10/3 -5	81-78-79-238 (+22)	Edean Ihlanfeldt Invitational

Overall Place

T44th of 86
T41st of 63

Place on Team

Individual
Individual



DARCIE RICHMOND

Senior

Bothell, Wash. (Bothell HS)

2011-12 Tournament Results

Date	Score	Tournament
9/19-20	81-81-79-241 (+25)	WSU Cougar Cup
10/3-5	85-79-77-241 (+25)	Edean Ihlanfeldt Invitational

Overall Place

T53rd of 86
T54th of 63

Place on Team

Individual
Individual



BRITTANY TALLMAN

Junior

Issaquah, Wash. (Issaquah HS)

2011-12 Tournament Results

Date	Score	Tournament
9/19-20	87-79-81-247 (+31)	WSU Cougar Cup
10/3-5	74-82-84-240 (+24)	Edean Ihlanfeldt Invitational
2/18-19	78-80-158 (+16)	Peg Barnard Invitational
3/5-6	77-77-83-237 (+21)	Juli Inkster Invitational
3/31-4/1	80-77-73 (+27)	Lady Sun Devil Invitational

Overall Place

T53rd of 86
T46th of 63
33rd of 70
T34th of 66
T87th of 90

Place on Team

Individual
Individual
4th of 5
4th of 5
5th of 5

COACH MARY LOU MULFLUR - 29TH YEAR (WASHINGTON, 1980)



In the history of the Husky women's golf team, two individuals stand out as the cornerstones for the program. The first is Edean Ihlanfeldt, the namesake of the Huskies' annual fall tournament. She was Washington's first coach. So dedicated to seeing women have an opportunity to compete on the intercollegiate level, Ihlanfeldt never accepted a paycheck for her efforts. She funneled her salary back into the program. The second is current head coach Mary Lou Mulflur, who is entering her 29th season in 2011-12 directing the Huskies.

A player for Ihlanfeldt, Mulflur's passion and commitment to Husky golf makes her former mentor proud. Mulflur's dedication, teaching skills and fundraising abilities have allowed her to build the Husky program into one of the nation's most competitive teams on an annual basis. The 2010-11 Huskies returned to the NCAA Championship for the first time in five seasons. Their 16th place finish at Texas A&M's Traditions Course tied for the team's sixth-best finish at the Championship.

In 2006, the Huskies matched a school-record with a sixth-place finish at the NCAA Championships, its second Top-10 finish in three years and third overall. Senior Paige Mackenzie led the way, winning Washington's first individual Pac-10 title and the second-ever NCAA West Regional title. Mackenzie also notched her second-straight Top-10 NCAA finish with an eighth-place standing. Mackenzie culminated her career with her second-straight All-America honor.

In 2005, the Huskies placed 14th at the NCAA Championships, with Mackenzie recording Washington's first ever top 10 NCAA finish. She placed 10th and received honorable mention All-America honors after the season. The 2005 season was the 13th consecutive year the Huskies advanced to the NCAA Regional Championships. Washington has competed at the Regionals all but one year since its inception in 1993.

In 2004, Washington experienced one of its greatest campaigns, finishing sixth at the NCAA Championships. It was the highest finish ever by a UW team at the NAAs. The Huskies were led by Mackenzie, who placed 11th at the national championships and was named a second-team All-American. Classmate Sung Ee Lee was named an honorable mention All-American. In Mulflur's tenure at Washington, six Huskies have earned All-America honors a total of 10 times.

In 2001, Mulflur led Washington to a 16th-place finish at the NCAA Championships. At the time, it was the best showing by a Husky team at the national championships. UW's 2002 NCAA Championships appearance was the fifth by the Huskies over a stretch of eight years. That season the Huskies won the Oregon Duck Invitational and the Peg Barnard California Collegiate, and tied for fifth at the Pac-10 Championships.

Mulflur's players have also achieved in the classroom. Mackenzie was named to the National Golf Coaches Association's All-Scholar Team three-straight seasons. During Mulflur's tenure, 12 UW golfers have earned the distinction on 23 occasions. Twice during Mulflur's career she has been named the Pac-10 Conference Coach of the Year. The first time she received the honor was in 1988. She picked up the award for the second time in 1999.

In 1995, Mulflur directed the Huskies to their first team NCAA Finals appearance on the strength of a sixth-place finish in the NCAA West Regional. In 1988, the UW had its best Pac-10 finish ever, placing third in the conference tournament. That year brought Mulflur her first Pac-10 Coach of the Year award. Mulflur has coached several Husky players who have gone on to play professionally or coach. Nancy Kessler-McDaniel, who played at UW from 1984 to 1988, went on to play professionally and is now the head coach at California. Former Husky All-American Kelli Kamimura is the head coach at Washington State University.

MULFLUR CAREER HIGHLIGHTS

- UW has made 19 NCAA Regional appearances under Mulflur and nine NCAA Championships.
- Players have been named NGCA All-America 10 times under Mulflur's tutelage.
- Ten first-team All-Pac-10 selections.
- UW athletes have been named Pac-10 All-Academic 28 times under Mulflur's watch.
- Pac-10 Coach of the Year in 1988 and 1999.
- Coached two NCAA Regional Champs (Paige Mackenzie, 2006 and Dodie Mazzuca, 1997).

Currently playing in the LPGA are Mulflur products Mackenzie and Louise Friberg. Both former Huskies played together at the 2008 SBS Open at Turtle Bay, marking the first time two UW alumni have played in the same LPGA event. Friberg won on the LPGA tour in 2005 in Mexico with a final round 65. Mulflur, regarded as one of the most successful golfers to come out of the UW, came to Washington in 1976 and was one of the first female athletes to receive a scholarship at Washington.

The Portland, Ore., native went on to earn four letters as a Husky. During her collegiate career Mulflur won three regular-season tournaments, including the inaugural Ihlanfeldt Invitational in 1980. To date, Kamimura is the only Husky golfer with more career wins than Mulflur. While attending Grant High School in Portland, Mulflur won state high school titles in 1974 and 1975. She also won the 1975 Oregon junior championship. Mulflur won Southern Oregon titles in 1980, 1982, 1995 and 1997 as well as the Oregon Coast Invitational in 1979, 1982, and 1990.

Mulflur has competed in five United States Golf Association events - The U.S. Open in 1979 and 1980 and the U.S. Amateur in 1979, 1980 and 1982. In addition she competed in four National Collegiate Championships. Mulflur graduated from Washington in 1980 with a degree in speech communications. She is a former vice-president of the National Golf Coaches Association and served on the LPGA SAFECO Classic Advisory Board.

She currently serves as a member of the NCAA Division I Women's Golf Committee. She appears annually as a celebrity player in several local golf events and fundraisers. In October of 2004, Mulflur was inducted into the PIL Hall of Fame in Portland. And in 2006 she was inducted into the Grant High School Hall of Fame. This past December she was awarded the NGCA Founders Award which honors a coach who has made significant contributions to the sport during the year.



Mary Lou Mulflur

2011-12 Washington Women's Golf Final Results

2011-12 Tournament Summary

Date	Tournament	Rd-1	Rd-2	Rd-3	To Par	Total	Finish	Low Player
Sept. 19-20	Cougar Cup	309	285	296	+26	890	1st	SooBin Kim, 221 (+5)
Oct. 3-5	Edean Ihlanfeldt Invitational	303	294	303	+36	900	T3rd	Jennifer Yang, 215 (-1)
Oct. 14-16	Stanford Intercollegiate	277 [^]	287	283	-5	847 [^]	3rd	SooBin Kim, 200 [^] (-13 [^])
Oct. 21-23	Pac-12/SEC Challenge	295	301	299	+31	895	T10th	SooBin Kim, 216 (E)
Nov. 1-2	Rainbow Wahine	295	289	285	+5	869	2nd	Sadena Parks, 213 (-3)
Feb. 18-19	Peg Barnard Invitational	304	303		+39	607	3rd	SooBin Kim, 146 (+1)
Mar. 5-6	Juli Inkster Invitational	296	300	311	+43	907	4th	SooBin Kim, 222 (+6)
Mar. 19-20	Battle at Rancho Bernardo	313	304		+41	617	T10th	Kelli Bowers, 150 (+6)
Mar. 30-Apr. 1	Lady Sun Devil Invitational	298	296	312	+54	906	T14	Sadena Parks, 221 (+8)
Apr. 16-17	Pacific Coast Intercollegiate	288	297	286	+7	871	5th	Parks & Kim, 218 (+2)
Apr. 27-29	Pac-12 Championship	315	294	300	+45	909	T8th	SooBin Kim, 222 (+6)
May 10-12	NCAA Regionals							
May 22-25	NCAA Championships (Franklin, Tenn.)							

[^] School Record # JV event * individuals only %match play event !played tournament as individual

2011-12 Individual Statistics

Player	Events	Rounds	Strokes	Avg.	Low Round	Low 54-Hole	Top Finish	Top 10's	60s	Rounds -Par
SooBin Kim	11	31	2275	73.38	66	200*	1st	5	4	6
Sadena Parks	9	26	1943	74.73	66	213	T2nd	2	1	7
Jennifer Yang	11	31	2324	74.97	69	215	T2nd	2	2	3
Kelli Bowers	11	31	2355	75.97	71	218	11th	0	0	1
Cyd Okino	10	28	2131	76.11	68	222	T5th	1	1	1
Jennifer Lides	2	6	475	79.17	78	237	T41st	0	0	0
Brittany Tallman	5	14	883	80.21	74	237	33rd	0	0	0
Darcie Richmond	2	6	482	80.33	77	241	T48th	0	0	0

* school record



Team Bests for 2011-12

Team Best Rounds - Gross Score (Top-10)

Score	-Par	Event	Round	Date
277	-7	Stanford Intercollegiate	1	Oct. 14, 2011
284	-1	Stanford Intercollegiate	3	Oct. 16, 2011
285	-3	WSU Cougar Cup	2	Sept. 19, 2011
285	-3	Rainbow Wahine	3	Nov. 2, 2011
286	-2	Pacific Coast Intercollegiate	3	April 17, 2012
288	E	Pacific Coast Intercollegiate	1	April 16, 2012
289	+1	Rainbow Wahine	2	Nov. 1, 2011
287	+3	Stanford Intercollegiate	2	Oct. 15, 2011
294	+6	Edean Ihlanfeldt Invitational	2	Oct. 4, 2011
294	+6	Pac-12 Championship	2	April 28, 2012
295	+7	Rainbow Wahine	1	Nov. 1, 2011
295	+7	Pac-12/SEC Challenge	1	Oct. 21, 2011

Team Best Rounds - Vs. Par (Top-10)

-Par	Score	Event	Round	Date
-7	277	Stanford Intercollegiate	1	Oct. 14, 2011
-3	285	WSU Cougar Cup	2	Sept. 19, 2011
-3	285	Rainbow Wahine	3	Nov. 2, 2011
-2	286	Pacific Coast Intercollegiate	3	April 17, 2012
-1	284	Stanford Intercollegiate	3	Oct. 16, 2011
E	288	Pacific Coast Intercollegiate	1	April 16, 2012
+1	289	Rainbow Wahine	2	Nov. 1, 2011
+3	287	Stanford Intercollegiate	2	Oct. 15, 2011
+6	294	Edean Ihlanfeldt Invitational	2	Oct. 4, 2011
+6	294	Pac-12 Championship	2	April 28, 2012
+7	295	Rainbow Wahine	1	Nov. 1, 2011
+7	295	Pac-12/SEC Challenge	1	Oct. 21, 2011

Team Tournaments - Gross Score

Score	-Par	Event	Date
607	+39	Peg Barnard Invitational (36 holes)	Feb. 18-19, 2012
617	+41	Battle at Rancho Bernardo (36 holes)	March 19-20, 2012
847	-5	Stanford Intercollegiate	Oct. 14-16, 2011
869	+5	Rainbow Wahine	Nov. 1-2, 2011
871	+7	Pacific Coast Intercollegiate	April 16-17, 2012
890	+26	WSU Cougar Cup	Sept. 19-20, 2011
895	+31	Pac-12/SEC Challenge	Oct. 21-23, 2011
900	+36	Edean Ihlanfeldt Invitational	Oct. 3-5, 2011
906	+54	Lady Sun Devil Invitational	March 30-April 1, 2012
907	+43	Juli Inkster Invitational	March 5-6, 2012
909	+45	Pac-12 Tournament	April 27-29, 2012

Team Tournaments - Vs. Par

-Par	Score	Event	Date
-5	847	Stanford Intercollegiate	Oct. 14-16, 2011
+5	869	Rainbow Wahine	Nov. 1-2, 2011
+7	871	Pacific Coast Intercollegiate	April 16-17, 2012
+26	890	WSU Cougar Cup	Sept. 19-20, 2011
+31	895	Pac-12/SEC Challenge	Oct. 21-23, 2011
+36	900	Edean Ihlanfeldt Invitational	Oct. 3-5, 2011
+39	607	Peg Barnard Invitational (36 holes)	Feb. 18-19, 2012
+41	617	Battle at Rancho Bernardo (36 holes)	March 19-20, 2012
+42	907	Juli Inkster Invitational	March 5-6, 2012
+45	909	Pac-12 Tournament	April 27-29, 2012
+54	906	Lady Sun Devil Invitational	March 30-April 1, 2012

Individual Bests for 2011-12

Individual Best Rounds - Gross Score

Score	- Par	Player	Event	Date
66	-5	SooBin Kim	Stanford Intercollegiate	Oct. 14, 2011
66	-5	Sadena Parks	Stanford Intercollegiate	Oct. 14, 2011
66	-5	SooBin Kim	Stanford Intercollegiate	Oct. 16, 2011
68	-4	Cyd Okino	WSU Cougar Cup	Sept. 19-20, 2011
68	-4	SooBin Kim	Pac-12/SEC Challenge	Oct. 21-23, 2011
68	-4	Sadena Parks	Rainbow Wahine Invitational	Nov. 1-2, 2011
69	-3	Jennifer Yang	Pac-12 Championship	April 29, 2012
69	-2	SooBin Kim	Stanford Intercollegiate	Oct. 15, 2011
69	-2	Sadena Parks	Lady Sun Devil Invitational	March 31, 2012
69	-3	Sadena Parks	Rainbow Wahine Invitational	Nov. 1-2, 2011
69	-3	Jennifer Yang	Pacific Coast Intercollegiate	April 17, 2012
70	-2	SooBin Kim	Rainbow Wahine Invitational	Nov. 1-2, 2011
70	-2	SooBin Kim	WSU Cougar Cup	Sept. 19-20, 2011
70	-2	Jennifer Yang	Edean Ihlanfeldt Invitational	Oct. 3-5, 2011
70	-2	Sadena Parks	Pacific Coast Intercollegiate	April 17, 2012
70	-2	Sadena Parks	Pac-12 Championship	April 28, 2012
71	-1	Sadena Parks	WSU Cougar Cup	Sept. 19-20, 2011
71	-1	Kelli Bowers	Juli Inkster Invitational	March 5, 2012
71	E	Kelli Bowers	Stanford Intercollegiate	Oct. 15, 2011
71	E	Cyd Okino	Stanford Intercollegiate	Oct. 14, 2011
71	E	SooBin Kim	Peg Barnard Invitational	Feb. 18, 2012

Individual Best Rounds - vs. Par

- Par	Score	Player	Event	Date
-5	66	SooBin Kim	Stanford Intercollegiate	Oct. 14, 2011
-5	66	Sadena Parks	Stanford Intercollegiate	Oct. 14, 2011
-5	66	SooBin Kim	Stanford Intercollegiate	Oct. 16, 2011
-4	68	Cyd Okino	WSU Cougar Cup	Sept. 19-20, 2011
-4	68	SooBin Kim	Pac-12/SEC Challenge	Oct. 21-23, 2011
-4	68	Sadena Parks	Rainbow Wahine Invitational	Nov. 1-2, 2011
-3	69	Sadena Parks	Rainbow Wahine Invitational	Nov. 1-2, 2011
-3	69	Jennifer Yang	Pacific Coast Intercollegiate	April 17, 2012
-3	69	Jennifer Yang	Pac-12 Championship	April 29, 2012
-2	69	Sadena Parks	Lady Sun Devil Invitational	March 31, 2012
-2	69	SooBin Kim	Stanford Intercollegiate	Oct. 15, 2011
-2	70	SooBin Kim	Rainbow Wahine Invitational	Nov. 1-2, 2011
-2	70	SooBin Kim	WSU Cougar Cup	Sept. 19-20, 2011
-2	70	Jennifer Yang	Edean Ihlanfeldt Invitational	Oct. 3-5, 2011
-2	70	Sadena Parks	Pacific Coast Intercollegiate	April 17, 2012
-2	70	Sadena Parks	Pac-12 Championship	April 28, 2012
-1	71	Sadena Parks	WSU Cougar Cup	Sept. 19-20, 2011
-1	71	Kelli Bowers	Juli Inkster Invitational	March 5, 2012

Individual Best Tournaments - Gross Score (54 holes)

Score	- Par	Player	Event	Date
146	+4	SooBin Kim	Peg Barnard Invitational (36 holes)	Feb. 18-19, 2012
150	+6	Kelli Bowers	Battle at Rancho Bernardo (36 holes)	March 19-20, 2012
200	-13	SooBin Kim	Stanford Intercollegiate	Oct. 14-16, 2011
213	-3	Sadena Parks	Rainbow Wahine Invitational	Nov. 1-2, 2011
214	+1	Sadena Parks	Stanford Intercollegiate	Oct. 14-16, 2011
215	-1	Jennifer Yang	Edean Ihlanfeldt Invitational	Oct. 3-5, 2011
216	E	SooBin Kim	Pac-12/SEC Challenge	Oct. 21-23, 2011
217	+1	Jennifer Yang	Rainbow Wahine Invitational	Nov. 1-2, 2011
218	+5	Kelli Bowers	Stanford Intercollegiate	Oct. 14-16, 2011
218	+2	Sadena Parks	Pacific Coast Intercollegiate	April 16-17, 2012
218	+2	SooBin Kim	Pacific Coast Intercollegiate	April 16-17, 2012
219	+6	Jennifer Yang	Stanford Intercollegiate	Oct. 14-16, 2011

Individual Best Tournaments - vs. Par

- Par	Score	Player	Event	Date
-13	200	SooBin Kim	Stanford Intercollegiate	Oct. 14-16, 2011
-3	213	Sadena Parks	Rainbow Wahine Invitational	Nov. 1-2, 2011
-1	215	Jennifer Yang	Edean Ihlanfeldt Invitational	Oct. 3-5, 2011
E	216	SooBin Kim	Pac-12/SEC Challenge	Oct. 21-23, 2011
+1	217	Jennifer Yang	Rainbow Wahine Invitational	Nov. 1-2, 2011
+1	214	Sadena Parks	Stanford Intercollegiate	Oct. 14-16, 2011
+2	218	Sadena Parks	Pacific Coast Intercollegiate	April 16-17, 2012
+2	218	SooBin Kim	Pacific Coast Intercollegiate	April 16-17, 2012
+4	146	SooBin Kim	Peg Barnard Invitational (36 holes)	Feb. 18-19, 2012
+5	218	Kelli Bowers	Stanford Intercollegiate	Oct. 14-16, 2011
+5	221	Soo Bin Kim	WSU Cougar Cup	Sept. 19-20, 2011

2011-12 TOURNAMENT STATS OF UW INDIVIDUALS

*competed as an individual

Kelli Bowers

Date	Score	Tournament	Overall Place	Place on Team
9/19-20	81-74-73-228 (+12)	WSU Cougar Cup	T14th of 86	4th of 5
10/3-5	77-76-75-228 (+12)	Edean Ihlanfeldt Invitational	T12th of 63	T2nd of 5
10/14-16	74-73-71-218 (+5)	Stanford Intercollegiate	T39th of 90	3rd of 5
10/21-23	76-81-73-230 (+14)	Pac-12/SEC Challenge	T70th of 120	4th of 5
1/1-2	76-73-74-223 (+7)	Rainbow Wahine Invitational	T16th of 67	T4th of 5
2/18-19	78-76-154 (+12)	Peg Barnard Invitational	T24th of 70	3rd of 5
3/5-6	71-76-77-224 (+8)	Juli Inkster Invitational	T11th of 66	2nd of 5
3/19-20	76-74-150 (+6)	Battle at Rancho Bernardo	T19th of 90	1st of 5
3/31-4/1	80-72-82-234 (+21)	Lady Sun Devil Invitational	T75th of 90	4th of 5
4/16-17	72-75-77-224 (+8)	Pacific Coast Intercollegiate	T45th of 75	5th of 5
4/27-29	84-79-79-242 (+26)	Pac-12 Championship	T53rd of 55	5th of 5

SooBin Kim

Date	Score	Tournament	Overall Place	Place on Team
9/19-20	76-70-75-221 (+5)	WSU Cougar Cup	T2nd of 86	1st of 5
10/3-5	76-76-80-232(+16)	Edean Ihlanfeldt Invitational	T27th of 63	4th of 5
10/14-16	66-68-66-200 (-13)	Stanford Intercollegiate	1st of 90	1st of 5
10/21-23	73-75-68-216 (E)	Pac-12/SEC Challenge	6th of 120	1st of 5
1/1-2	75-75-70-220 (+4)	Rainbow Wahine Invitational	12th of 67	3rd of 5
2/18-19	75-71-146 (+4)	Peg Barnard Invitational	T3rd of 70	1st of 5
3/5-6	73-72-77-222 (+6)	Juli Inkster Invitational	T6th of 66	1st of 5
3/19-20	77-76-153 (+9)	Battle at Rancho Bernardo	T30th of 90	T2nd of 5
3/31-4/1	75-78-72-225 (+12)	Lady Sun Devil Invitational	T41th of 90	2nd of 5
4/16-17	72-74-72-218 (+2)	Pacific Coast Intercollegiate	T17th of 75	T1st of 5
4/27-29	75-72-75-222 (+6)	Pac-12 Championship	T12th of 55	1st of 5

Jennifer Lienes

Date	Score	Tournament	Overall Place	Place on Team
9/19-20	78-80-79-237 (+21)	WSU Cougar Cup	T44th of 86	Individual
10/3 -5	81-78-79-238 (+22)	Edean Ihlanfeldt Invitational	T41st of 63	Individual

Cyd Okino

Date	Score	Tournament	Overall Place	Place on Team
9/19-20	76-68-79-223 (+7)	WSU Cougar Cup	T5th of 86	T2nd of 5
10/3-5	79-72-77-228 (+12)	Edean Ihlanfeldt Invitational	T12th of 63	T2nd of 5
10/14-16	71-76-75-222 (+9)	Stanford Intercollegiate	T57th of 90	5th of 5
10/21-23	74-75-77-226 (+10)	Pac-12/SEC Challenge	T53rd of 120	2nd of 5
1/1-2	72-76-75-223 (+7)	Rainbow Wahine Invitational	T16th of 67	T4th of 5
2/18-19	73-78-151 (+9)	Peg Barnard Invitational	T13th of 70	2nd of 5
3/5-6	83-79-78-240 (+24)	Juli Inkster Invitational	T43rd of 66	5th of 5
3/19-20	83-83-166 (+22)	Battle at Rancho Bernardo	T82nd of 90	5th of 5
4/16-17	72-73-75-220 (+4)	Pacific Coast Intercollegiate	T28th of 75	4th of 5
4/27-29	79-76-77-232 (+16)	Pac-12 Championship	T44th of 55	4th of 5

Sadena Parks

Date	Score	Tournament	Overall Place	Place on Team
9/19-20	78-74-71-223 (+7)	WSU Cougar Cup	T5th of 86	T2nd of 5
10/3-5	77-78-79-234 (+18)	Edean Ihlanfeldt Invitational	T32nd of 63	5th of 5
10/14-16	66-74-74-214 (+1)	Stanford Intercollegiate	T20th of 90	2nd of 5
10/21-23	72-76-81-229 (+13)	Pac-12/SEC Challenge	T67th of 120	3rd of 5
1/1-2	76-69-68-213 (-3)	Rainbow Wahine Invitational	T2nd of 67	1st of 5
3/19-20	82-79-161 (+17)	Battle at Rancho Bernardo	T72nd of 90	4th of 5
3/31-4/1	69-75-77-221 (+8)	Lady Sun Devil Invitational	T24th of 90	1st of 5
4/16-17	72-76-70-218 (+2)	Pacific Coast Intercollegiate	T17th of 75	T1st of 5
4/27-29	81-70-79-230 (+14)	Pac-12 Championship	T39th of 55	3rd of 5

Darcie Richmond

Date	Score	Tournament	Overall Place	Place on Team
9/19-20	81-81-79-241 (+25)	WSU Cougar Cup	T53rd of 86	Individual
10/3-5	85-79-77-241 (+25)	Edean Ihlanfeldt Invitational	T54th of 63	Individual

Brittany Tallman

Date	Score	Tournament	Overall Place	Place on Team
9/19-20	87-79-81-247 (+31)	WSU Cougar Cup	T53rd of 86	Individual
10/3-5	74-82-84-240 (+24)	Edean Ihlanfeldt Invitational	T46th of 63	Individual
2/18-19	78-80-158 (+16)	Peg Barnard Invitational	33rd of 70	4th of 5
3/5-6	77-77-83-237 (+21)	Juli Inkster Invitational	T34th of 66	4th of 5
3/31-4/1	80-77-73 (+27)	Lady Sun Devil Invitational	T87th of 90	5th of 5

Jennifer Yang

Date	Score	Tournament	Overall Place	Place on Team
9/19-20	79-73-77-229 (+13)	WSU Cougar Cup	T20th of 86	5th of 5
10/3 -5	73-70-72-215 (-1)	Edean Ihlanfeldt Invitational	T2nd of 63	1st of 5
10/14-16	75-72-72-219 (+6)	Stanford Intercollegiate	T47th of 90	4th of 5
10/21-23	76-75-81-232 (+16)	Pac-12/SEC Challenge	T85th of 120	5th of 5
1/1-2	72-72-73-217 (+1)	Rainbow Wahine Invitational	T8th of 67	2nd of 5
2/18-19	81-78-159 (+17)	Peg Barnard Invitational	T34th of 70	5th of 5
3/5-6	75-75-79-229 (+13)	Juli Inkster Invitational	T17th of 66	3rd of 5
3/19-20	78-75-153 (+9)	Battle at Rancho Bernardo	T30th of 90	T2nd of 5
3/31-4/1	74-72-81 (+14)	Lady Sun Devil Invitational	T51st of 90	3rd of 5
4/16-17	75-75-69-219 (+3)	Pacific Coast Intercollegiate	T22nd of 75	3rd of 5
4/27-29	80-76-69-225 (+9)	Pac-12 Championship	T25th of 55	2nd of 5

WASHINGTON WOMEN'S TEAM RECORDS

YEAR-BY-YEAR STROKE AVERAGE LEADER

Anya Alvarez	74.0	2011
Anya Alvarez	74.7	2010
Anya Alvarez	74.9	2009
Anya Alvarez	76.8	2008
Amber Prange	76.4	2007
Paige Mackenzie	72.8	2006
Paige Mackenzie	73.7	2005
Paige Mackenzie	74.1	2004
Louise Friberg	74.9	2003
Louise Friberg	74.9	2002
Kelli Kamimura	74.4	1999
Elisha Au	77.9	1998
Dodie Mazzuca	75.1	1997
Dodie Mazzuca	75.9	1996
Dodie Mazzuca	76.6	1995
Dodie Mazzuca	78.5	1994
Sheri Vincent	79.3	1993
Julie Barleson	78.3	1992
Sheri Vincent	79.8	1991
Jennifer Yockey	75.5	1990

SINGLE-SEASON STROKE AVERAGE

1.	Paige Mackenzie	72.79	2006
2.	Paige Mackenzie	73.69	2005
3.	Anya Alvarez	74.00	2011
4.	Paige Mackenzie	74.09	2004
5.	Kelli Kamimura	74.3	2001
6.	Kelli Kamimura	74.5	1999
7.	Louise Friberg	74.9	2002
	Louise Friberg	74.9	2003
	Anya Alvarez	74.9	2009
10.	Sung Ea Lee	75.0	2004
11.	Lindsay Morgan	75.1	1997
	Dodie Mazzuca	75.1	1997
13.	Elisha Au	75.4	2000
14.	Kim Shin	75.5	2005
15.	Amber Prange	75.7	2005
	Sung Ea Lee	75.7	2005
	Paige Mackenzie	75.7	2002
	Elisha Au	75.7	1999

CAREER TOP-10 FINISHES

1	Paige Mackenzie	24
2.	Kelli Kamimura	20
3.	Dodie Mazzuca	18
4.	Louise Friberg	13
5.	Sung Ea Lee	11
6.	Lindsay Morgan	10
	Anya Alvarez	10
8.	Kerry Liedes	9
9.	Nancy Kessler	8
10.	Paula Gamble	7
	Janine Getty	7
	Katherine Lund	7
	Amber Prange	7
	Sherri Vincent	7

ALL-TIME MEDALISTS

1.	Kelli Kamimura	4
	Patti Marquis	4
3.	Janine Getty	3
	Paige Mackenzie	3
	Dodie Mazzuca	3
	Mary Lou Mulflur	3
7.	Nancy Kessler	2
	Elisha Au	2
	Karinn Dickinson	2
10.	Patty Abel	1
	Paula Gamble	1
	Jane Harris	1
	SooBin Kim	1
	Peggy Lund	1
	Darcie Richmond	1
	Angie Pieroni	1
	Terri Pharr	1
	Susan Sanders	1

CAREER ROUNDS PLAYED

1.	Paige Mackenzie	139
2.	Sung Ea Lee	133
3.	Louise Friberg	129
4.	Dodie Mazzuca	128
5.	Lindsay Morgan	127
6.	Kelli Kamimura	126
7.	Amber Prange	123
8.	Anya Alvarez	122
9.	Andrea Cordova	118
10.	Sadena Parks	117

SINGLE-SEASON TOP-10 FINISHES

1.	Dodie Mazzuca	8	1997
2.	Paige Mackenzie	7	2004
3.	Paige Mackenzie	6	2006
	Paige Mackenzie	6	2005
	Louise Friberg	6	2003
	Nancy Kessler	6	1988
7.	Kim Shin	5	2005
	Sung Ea Lee	5	2004
	Kelli Kamimura	5	2002
	Kelli Kamimura	5	2005
	Dodie Mazzuca	5	1996
	Kelli Kamimura	5	1999
	Louise Friberg	5	2002
	Lindsay Morgan	5	2003
	SooBin Kim	5	2012



SooBin Kim

ALL-TIME WASHINGTON HUSKY BESTS SCORES

INDIVIDUAL

BEST 18-HOLE SCORE

65 (-7) Dodie Mazzuca (third round), Sahalee CC, Redmond, WA, Oct. 9, 1997
66 (-6), Anya Alvarez (2nd round), Boulder Creek GC, Boulder Creek, Nev., Oct. 28, 2008
66 (-6), Sadena Parks (2nd round), Washington National, Auburn, Wash., May 6, 2011
66 (-6), Kelli Kamimura (3rd round), Corral de Tierra CC, Salinas, Calif., March 7, 2001
66 (-5), SooBin Kim (1st round), Stanford Golf Club, Stanford, Calif., Oct. 14, 2011
66 (-5), Sadena Parks (1st round), Stanford Golf Club, Stanford, Calif., Oct. 14, 2011

BEST FIRST ROUND

66 (-5), SooBin Kim, Stanford Golf Club, Stanford, Calif., Oct. 14, 2011
66 (-5), Sadena Parks, Stanford Golf Club, Stanford, Calif., Oct. 14, 2011
67 (-3), Paige Mackenzie, Stanford, Calif., Oct. 15, 2004
67 (-4), Kelli Kamimura, Trysting Tree GC, Corvallis, Ore., Oct. 11, 1998

BEST SECOND ROUND SCORE

66 (-6), Anya Alvarez, Boulder Creek GC, Boulder Creek, Nev., Oct. 28, 2008
66 (-6), Sadena Parks, Washington National, Auburn, Wash., May 6, 2011
67 (-3), Anya Alvarez, Karsten Golf Course, Tempe, Ariz., April 6, 2008

BEST THIRD ROUNDS SCORE

65 (-7), Dodie Mazzuca, Sahalee CC, Redmond, Wash., Oct. 9, 1997
66 (-6), Kelli Kamimura, Corral de Tierra CC, Salinas, Calif., March 7, 2001
67 (-5), Anya Alvarez, Boulder Creek GC, Boulder Creek, Nev., Mar. 11, 2009

BEST THREE ROUNDS SCORE

200 (-13), SooBin Kim, Stanford GC, Stanford, Calif., Oct. 14-16, 2011
203 (-13), Anya Alvarez, Boulder Creek GC, Boulder Creek, Nev., Oct. 27-29, 2008
208 (-8), Paige Mackenzie, Washington National, Auburn, Wash., May 11-13, 2006
209 (-7), Kelli Kamimura, Corral de Tierra CC, Salinas, Calif., March 5-7, 2001

TEAM

BEST 18-HOLE SCORE

277 (-7), Stanford Intercollegiate, Stanford GC, Stanford, Calif., Oct. 11, 2011
280 (-8), Stanford Intercollegiate, Stanford GC, Stanford, Calif., Oct. 17, 2003
280 (-8), Stanford Intercollegiate, Stanford GC, Stanford, Calif., Oct. 18, 2003
280 (-8), Las Vegas Founders Collegiate, Anthem CC, Las Vegas, NV, Nov. 1-3, 2004

BEST FIRST ROUND

277 (-7), Stanford Intercollegiate, Stanford GC, Stanford, Calif., Oct. 11, 2011
280 (-8), Stanford Intercollegiate, Stanford GC, Stanford, Calif., Oct. 17, 2003

BEST SECOND ROUND SCORE

280 (-8), Stanford Intercollegiate, Stanford GC, Stanford, Calif., Oct. 18, 2003

BEST THIRD ROUNDS SCORE

280 (-8), Las Vegas Founders Collegiate, Anthem CC, Las Vegas, NV, Nov. 1-3, 2004

BEST THREE ROUNDS SCORE

-14 (280-280-290-850) Stanford Intercollegiate, Stanford Golf Course, Stanford, Calif., Oct. 18, 2003



Paige Mackenzie



Dodie Mazzuca



Anya Alvarez

HUSKIES IN THE POST-SEASON

TEAM

Pac-12 Championships

Year	Place	Team Scoring
1988	3rd	315-303-314-312-1244
2002	5th	309-303-297-909
2001	5th	302-300-288-890
2010	5th	296-314-296-906
1996	5th	301-302-308-911
1998	5th	303-305-309-917
1990	5th	308-312-313-933
2006	6th	308-300-302-910
2005	6th	298-304-295-897
2004	6th	309-310-311-930
1995	6th	306-298-300-904
1999	6th	309-301-305-915
1991	6th	319-312-329-960
1989	6th	327-340-329-996
1987	6th	317-320-302-312-1251
1997	7th	304-308-317-929
1992	7th	315-322-301-938
1993	7th	324-311-311-946
1994	7th	322-324-325-971
2007	7th	313-308-317-938
2012	8th	315-294-300-909
2011	8th	307-299-308-914
2000	8th	311-305-302-918
2003	8th	300-314-315-929
2009	9th	305-301-307-913
2008	9th	310-308-318-936

NCAA Regionals

Year	Place	Team Scoring
2006	3rd	288-303-297-888
2004	4th	298-309-285-892
2002	6th	310-303-291-904
1995	6th	303-306-298-907
2011	7th	304-294-307-905
2001	7th	308-302-304-914
2005	8th	306-298-296-900
1998	9th	300-304-307-911
2009	10th	308-300-319-927
1997	11th	289-302-306-897
1999	12th	315-310-307-932
2003	13th	311-318-294-923
1993	13th	298-299-303-900
1996	13th	303-333-329-965
2010	17th	305-295-307-907
2000	17th	321-298-297-916
2008	17th	312-310-310-932
1994	18th	323-313-308-944

NCAA Championships

Year	Place	Team Scoring
2006	6th	305-304-293-300-1202
2004	6th	305-298-297-284-1184
1978	9th	
2005	14th	292-314-296-299-1201
1977	14th	1308
2011	16th	312-307-297-293-1209 (+57)
2001	16th	315-305-310-296-1226
1995	16th	312-303-307-312-1234
1998	18th	303-298-314-314-1229
1997	18th	321-311-311-324-1267
2002	20th	302-297-305-299-1203

INDIVIDUAL

Pac-10 Championships (Top-10 Finishes)

Year	Name	Place	Scoring
2006	Paige Mackenzie	1st	71-71-69-211
2001	Kelli Kamimura	3rd	74-71-70-215
1993	Angie Burkett	4th	77-74-73-224
1988	Nancy Kessler	4th	79-72-77-72-300
2002	Lindsay Morgan	6th	76-72-74-222
2000	Elisha Au	6th	76-74-72-222
2002	Louise Friberg	7th	74-79-70-223
1997	Dodie Mazzuca	7th	72-74-74-220
2003	Sung Ea Lee	8th	71-76-76-223
1994	Dodie Mazzuca	8th	79-75-78-232
2005	Amber Prange	9th	73-74-71-218
1991	Angie Pieroni	9th	82-72-80-234
2004	Sung Ea Lee	10th	77-77-75-229

NCAA Regionals (Top-25 Finishes)

Year	Name	Place	Scoring
2006	Paige Mackenzie (W)	1st	68-69-71-208
1997	Dodie Mazzuca (W)	1st	69-71-71-211
2006	Amber Prange (W)	5th	69-77-74-220
2004	Paige Mackenzie (W)	7th	75-75-67-217
2003	Lindsay Morgan (W)	4th	73-76-68-217
2002	Louise Friberg (W)	8th	76-73-71-220
2001	Kelli Kamimura (W)	8th	74-69-77-220
2003	Sung Ea Lee (W)	10th	75-73-72-220
1995	Dodie Mazzuca (W)	12th	77-71-74-222
2004	Sung Ea Lee (W)	15th	72-76-73-221
1996	Dodie Mazzuca (W)	16th	73-78-78-229
2001	Louise Friberg (W)	18th	75-75-75-225
2005	Amber Prange (E)	19th	74-75-72-221
2009	Sadena Parks (C)	20th	75-76-78-229
1999	Elisha Au (W)	22nd	78-76-73-227
2011	Sadena Parks (W)	T22nd	81-66-77-224
1998	Elisha Au (W)	23rd	78-73-75-226
1999	Kelli Kamimura (W)	25th	79-76-73-228
2011	Anya Alvarez (W)	T25th	70-78-78-226

(W = West Regional / E = East Regional / C = Central Region)

NCAA Championships

Year	Name	Place	Scoring
2006	Paige Mackenzie	8th	76-73-72-72-293
2005	Paige Mackenzie	10th	72-74-73-74-292
2004	Paige Mackenzie	11th	73-78-69-68-288
2005	Amber Prange	16th	72-77-72-75-296
2002	Paige Mackenzie	25th	76-70-76-72-294
2011	Kelli Bowers	T26th	78-74-73-72-297
2001	Kelli Kamimura	29th	79-77-73-70-299
2011	Anya Alvarez	T32nd	74-76-72-76-298
1988	Nancy Kessler	32nd	74-73-77-76-300
2006	Sung Ea Lee	33rd	75-75-72-78-300
1995	Angie Burkett	33rd	78-75-73-76-302
1998	Elisha Au	42nd	71-74-82-76-303
1997	Dodie Mazzuca	47th	81-75-74-75-305
1996	Dodie Mazzuca	48th	85-77-85-76-323
1995	Dodie Mazzuca	55th	73-77-77-81-308
1998	Andrea Cordova	62nd	72-77-79-80-309
2006	Amber Prange	64th	78-76-76-76-306
2003	Lindsay Morgan	66th	80-86-73-73-312
2004	Lindsay Morgan	68th	78-75-79-70-302
2004	Sung Ea Lee	69th	76-73-77-77-303
1997	Andrea Cordova	69th	79-77-78-78-312
1995	Caroline Spiegelberg	79th	83-71-79-82-315
2001	Louise Friberg	77th	81-79-77-74-311

HUSKY ACCOLADES

NGCA All-American

2006	Paige Mackenzie (1st)
2005	Paige Mackenzie (HM)
2004	Sung Ea Lee (HM)
2004	Paige Mackenzie (2nd)
2003	Lindsay Morgan
2001	Kelli Kamimura
1999	Kelli Kamimura
1997	Dodie Mazzuca
1996	Dodie Mazzuca
1988	Nancy Kessler
1978	Robin Walton

Pac-12 Coach of the Year

1999	Mary Lou Mulflur
1988	Mary Lou Mulflur

All-Pac-12

2012	SooBin Kim, 2nd Team
2011	Anya Alvarez, HM
2010	Anya Alvarez, HM
2009	Anya Alvarez, HM
2006	Paige Mackenzie, 1st Team
2005	Paige Mackenzie, 1st Team
2004	Paige Mackenzie, 1st Team
2004	Sung Ea Lee, 2nd Team
2003	Louise Friberg, 1st Team
2003	Lindsay Morgan, 2nd Team
2002	Louise Friberg, 2nd Team
2002	Kelli Kamimura, 2nd Team

2001	Kelli Kamimura, 1st Team
2000	Elisha Au, 2nd Team
1999	Kelli Kamimura, 1st Team
1997	Dodie Mazzuca, 1st Team
1996	Dodie Mazzuca, 1st Team
1995	Dodie Mazzuca, 1st Team
1988	Nancy Kessler, 1st Team

Scholar All-Americans

2006	Paige Mackenzie
2005	Paige Mackenzie
2004	Paige Mackenzie
2003	Michelle Grafos
2002	Paige Mackenzie
2002	Michelle Grafos
2001	Michelle Grafos
1999	Paola Bellotti
1998	Paola Bellotti
1997	Dodie Mazzuca
1997	Emily Martin
1996	Dodie Mazzuca
1996	Emily Martin
1996	Meg Maedo
1995	Emily Martin
1995	Meg Maedo
1994	Lee Kurlmel
1993	Val McKie
1992	Anne Huizinga
1990	Carrie Eliason
1988	Michelle Watson
1987	Paula Gamble

Pac-12 All-Academic

2008	Molly Boyle, HM
2007	Amber Prange, 2nd Team
2007	Molly Boyle, HM
2007	Kim Shin, HM
2006	Paige Mackenzie, 1st Team
2006	Amber Brange, HM
2006	Kim Shin, HM
2005	Paige Mackenzie, 1st Team
2004	Paige Mackenzie, 2nd Team
2003	Michelle Grafos, 1st Team
2003	Paige Mackenzie, 2nd Team
2002	Michelle Grafos, 1st Team
2002	Lindsay Morgan, 2nd Team
1999	Jennifer Stapleton, 2nd Team
1998	Paola Bellotti, 2nd Team
1997	Dodie Mazzuca, 1st Team
1997	Emily Martin, 1st Team
1996	Emily Martin, 1st Team
1996	Dodie Mazzuca, 1st Team
1995	Emily Martin, 2nd Team
1995	Dodie Mazzuca, 1st Team
1994	Lee Kurlmel, 2nd Team
1993	Angie Pieroni, 2nd Team
1993	Val McKie, 2nd Team
1992	Angie Pieroni, 2nd Team

ALL-TIME HUSKY MEDALISTS

SooBin Kim

200 - Stanford Intercollegiate
Palo Alto, Calif.
Stanford Golf Course
Oct. 11-13, 2011

Darcie Richmond

144 - Gonzaga Spring Regional
Spokane, Wash.
Liberty Lake Golf Course
April 10, 2011

Karinn Dickinson

220 - Washington State Invite
Pullman, Wash.
Palouse Ridge Golf Course
Sept. 10-12, 2010

Karinn Dickinson

142 - Peg Barnard Collegiate
Palo Alto, Calif.
Stanford Golf Course
April 11-12, 2008

Paige Mackenzie

208-NCAA West Regional
Auburn, Wash.
Washington National
May 11-13, 2006

Paige Mackenzie

211-Pac-10 Championships
Oro Valley, Ariz.
Oro Valley Country Club
April 24-26, 2006

Paige Mackenzie

214-Kent Youel Invitational
Oahu, Hawaii
Kapolei Golf Course
Nov. 4-5, 2003

Elisha Au

221-Rainbow Wahine Classic
Oahu, Hawaii
Kapolei Golf Course
Oct. 31-Nov. 1, 2000

Kelli Kamimura

138-Bay Area Classic
Vallejo, Calif.
Hiddenbrooke CC
Feb. 26-27, 2001

Kelli Kamimura

209-Spartan Invitational
Salinas, Calif.
Corral de Dierra CC
Mar. 5-7, 2001

Kelli Kamimura

213-Northwest Invitational
Corvallis, Ore.
Trysting Tree Golf Club
Oct. 11-13, 1998

Elisha Au

215-Stanford Intercollegiate
Palo Alto, Calif.
Stanford Golf Course
Oct. 23-25, 1998

Kelli Kamimura

142-Bay Area Classic
Vallejo, Calif.
Blue Springs CC
Mar. 1-2, 1999

Dodie Mazzuca

150-BYU Invitational
Provo, Utah
Hobble Creek
Sept. 16-17, 1996

Dodie Mazzuca

213-Edean Ihlanfeldt Invite.
Redmond, Wash.
Sahalee CC
Oct. 7-9, 1996

Dodie Mazzuca

211-NCAA West Regional
Tucson, Ariz.
Randolph Park North Course
May 8-10, 1997

Angie Pieroni

226-Corvallis, Ore.
Oregon State Invitational
Trysting Tree Golf Course
Apr. 10-11, 1992

Nancy Kessler

221-BYU Invitational
Provo, Utah
Hobble Creek Golf Course
Sept. 21-23, 1987

Nancy Kessler

228-Edean Ihlanfeldt Invite.
Redmond, Wash.
Sahalee CC
Oct. 12-14, 1987

Peggy Lund

235-Gearhart Invitational
Gearhart, Ore.
Gearhart Golf Course
Apr. 24-26, 1986

Paula Gamble

159-WSU Women's Invite.
Pullman, Wash.
WSU Golf Course
Oct. 15-16, 1983

Janine Getty

230-Gearhart Invitational
Gearhart, Ore.
Gearhart CC
Apr. 28-30

Jane Harris

224-Weber State Invite.
Sept. 23-25, 1983

Janine Getty

160-Oregon State Invite.
Corvallis, Ore.
Corvallis CC
Apr. 29-30, 1983

Tarie Pharr

218-Oregon State Invite.
Corvallis, Ore.
Corvallis CC
Oct. 11-13, 1981

Janine Getty

237-Oregon State Invite
Corvallis, Ore.
Springhill/Tokatee/Corvallis CC
Apr. 17-19, 1982

Susan Sanders

236-Portland Invite
Portland, Ore.
Colwood, Waverly, Gresham Golf
Club
Apr. 5-7, 1981

Mary Lou Mulflur

155-U. Of British Columbia
1979

Patty Abel

236-Washington Invitational
Seattle, Wash.-1979

Mary Lou Mulflur

224-BYU Invitational
Provo, Utah
1978

Patti Marquis

157-U of British Columbia Dual
Vancouver, B.C.
Point Grey Golf Course
Mar. 21-22, 1977

Patti Marquis

237-UW Invitational
Bellevue, Wash.
Glendale CC
Apr. 18-20, 1977

Patti Marquis

228-UW v OU & OSU
Portland, Ore.
Royal Oaks/Riverside/Colwood CC
Apr. 22-24, 1977

Patti Marquis

229-Northwest Collegiate Invite.
Gearhart, Ore.
Gearhart CC
May 1-3, 1977

Mary Lou Mulflur

225-Daisy Duck Invitational
Eugene, Ore.
Emerald Valley CC
May 16-18, 1977

ALL-TIME TEAM EVENT CHAMPIONSHIPS

Tournament	Location	Course	Date
Cougar Cup	Pullman, WA	Palouse Ridge Golf Course	Sept. 19-20, 2011
Peg Barnard California Collegiate	Stanford, CA	Stanford Golf Course	April 9-10, 2005
Bay Area Classic	San Jose, CA	Boulder Ridge Golf Club	Feb. 16-17, 2004
Peg Barnard California Collegiate	Stanford, CA	Stanford Golf Course	April 13-14, 2002
Oregon Duck Invitational	Lebanon, OR	Mallard Creek Golf Club	Mar. 28-29, 2002
Bay Area Classic	Vallejo, CA.	Hiddenbrooke Country Club	Feb. 26-27, 2001
California Collegiate	Stanford, CA	Stanford Golf Course	Apr. 15-16, 2000
Bryan National Collegiate	Browns Summit, NC	Bryan Park Champions G.C.	Mar. 26-28, 1999
Northwest Invitational	Corvallis, OR	Trysting Tree Golf Club	Oct. 11-13, 1998
BYU Invitational	Provo, UT	Hobble Creek	Sept. 16-17, 1996
Santa Clara Colby Invitational	Monterey, CA	Old Del Monte Golf Club	Feb. 12-13, 1996
Rolex Northwest Collegiate	Corvallis, OR	Trysting Tree Golf Club	Sept. 25-26, 1995
OSU/Nike Invitational	Corvallis, OR	Trysting Tree Golf Club	Apr. 9-10, 1993
Utah-Dixie Classic	St. George, UT	Sunbrook Golf Club	Mar. 9-10, 1992
Oregon Invitational	Eugene, OR	Eugene Country Club	Mar. 6-8, 1989
Gearhart Invitational	Gearhart, OR	Gearhart Golf Course	Apr. 24-26, 1986
Gearhart Invitational	Gearhart, OR	Gearhart Golf Course	Apr. 28-30, 1984
Washington State Women's Invite	Pullman, WA	WSU Golf Course	Oct. 15-16, 1983
Mike Farrell-Lady Wildcat Invitational	Ogden, UT	Wolf Creek Country Club	Sept. 23-24, 1983
Oregon State Invitational	Corvallis, OR	Corvallis Country Club	Apr. 29-30, 1983
Oregon State Invitational	Corvallis, OR	Springhill, Tokatee, Corvallis Golf Courses	Apr. 17-19, 1982
Oregon State Invitational	Corvallis, OR	Corvallis Country Club	Oct. 11-13, 1981
Portland Invitational	Portland, OR	Colwood, Waverly, Gresham Golf Courses	Apr. 5-7, 1981
U. of British Columbia Dual			1979
Washington Invitational	Seattle, WA		1979
UW vs. Oregon & OSU	Portland, OR	Royal Oaks, Riverside, Colwood Country Clubs	Apr. 24-26., 1977
UW Invitational Bellevue, WA		Glendale Country Club	Apr. 18-20, 1977
U. of British Columbia Dual	Vancouver, BC	Point Grey Golf Course	Mar. 21-22, 1977
Daisy Duck Invitational	Eugene, OR	Emerald Valley Country Club	May 16-18, 1977
Northwest Collegiate Invitational	Gearhart, OR	Gearhart Country Club	May 1-3, 1977



The 2006 Huskies finished sixth at the NCAA championship, equaling the best finish ever in UW history.

ALL-TIME LETTERWINNERS

A

Abel, Patti 1979
 Alvarez, Anya 2008, 09, 10, 11
 Aoki, Christine 1975, 76
 Aronsson, Molly 2007, 08, 09, 10
 Au, Elisha 1998, 99, 2000, 01

B

Bartleson, Julie 1989, 90, 91, 92
 Bellotti, Paola 1996, 97, 98, 99
 Bickerton, Ashley 2004, 05, 06
Bowers, Kelli 2011, 12
 Boyle, Molly 2007, 08, 09
 Britt, Elizabeth 1985, 86, 87, 88
 Burkett, Angie 1993, 94, 95, 96
 Burns, Heidi 1989, 90, 91

C

Choi, A Ram 2011
 Clark, Bianca 2001, 02
 Colyer, Alison 1992, 93
 Cooper, Mendy 1997, 98, 2000
 Cordova, Andrea 1997, 98, 99, 2000

D

Dickinson, Karinn 2008, 09, 10, 11
 Drake, Stephanie 1979, 80, 81, 82

E

Eliason, Carrie 1988, 89, 90, 91

F

Ferrero, Nicole 2008, 09, 10, 11
 Foster, Janice 1976, 77, 78, 79
 Friberg, Louise 2000, 01, 02, 03

G

Galmanis, Kimberly 1989
 Gamble, Paula 1984, 85, 86, 87
 Getty, Janine 1981, 82, 83, 84
 Gonder, Angie 1991
 Grafos, Michelle 2000, 01, 02, 03

H

Harris, Jane 1982, 83
 Hildreth, Susan 1983, 84, 85, 86
 Huizinga, Anne 1992, 93

K

Kamimura, Kelli 1999, 2000, 01, 02
 Kessler, Nancy 1985, 86, 87, 88
Kim, SooBin 2012
 Krieger, Tina 1984, 85, 86, 87
 Kurlmel, Lee 1992, 93, 94

L

Lee, Sung Ea 2003, 04, 05, 06
 Lavelle, Keely 2011
Liedes, Jennifer 2012
 Liedes, Kerry 1982, 83, 84, 85

Lippitt, Sue 1998
 Litton, Janis 1976, 77
 Lund, Katherine 1985, 86, 87, 88

M

Mackenzie, Paige 2002, 04, 05, 06
 Maedo, Megan 1994, 95, 96
 Marquis, Patricia 1975, 76, 77
 Martin, Emily 1994, 95, 96, 97
 Martin, Kari 2000
 Mazzuca, Dodie 1994, 95, 96, 97
 McCracken, Courtney 2004, 05, 06
 McCusker, Kellee 1983
 McKie, Val 1992, 93
 Morgan, Lindsay 2001, 02, 03, 04
 Mulflur, Mary Lou 77, 78, 79, 80

O

Okino, Cyd 2012
 Olexio, Donna 1988, 89, 90, 91

P

Parks, Sadena 2009, 10, 11, 12
 Peck, Nancy 1980, 81
 Pieroni, Angie 1991, 92, 93
 Porambo, Lisa 1975, 76, 77
 Prange, Amber 2004, 05, 06, 07

R

Richmond, Darcie 2009, 10, 11, 12

S

Sanders, Susan 1980, 81
 Saucier, Katie 2008, 09, 10, 11
 Shin, Kim 2005, 06, 07
 Simkins, Sonja 1987
 Spiegelberg, Caroline 93, 94, 95, 96
 Stapleton, Jennifer 1997, 98, 99

T

Tallman, Brittany 2010, 11, 12
 Thorlakson, Elisabeth 1975, 76, 77
 Thompson, Greta 1979

V

Vincent, Sheri 1990, 91, 92, 93
 W Wang, Amy 2004, 05, 06
 Watson, Michelle 1985, 86, 87, 88
 Wellman, Janis 1975

Y

Yabe, Kim 1995, 96, 98
Yang, Jennifer 2012
 Yockey, Jennifer 1988, 89, 90, 91
 Yoon, Christina 2007, 08, 09, 10



Louise Friberg



Kelli Kamimura



Lindsay Morgan